



## Buzza Street 8

8 Buzza Street, Hugh Town, TR21 0HX



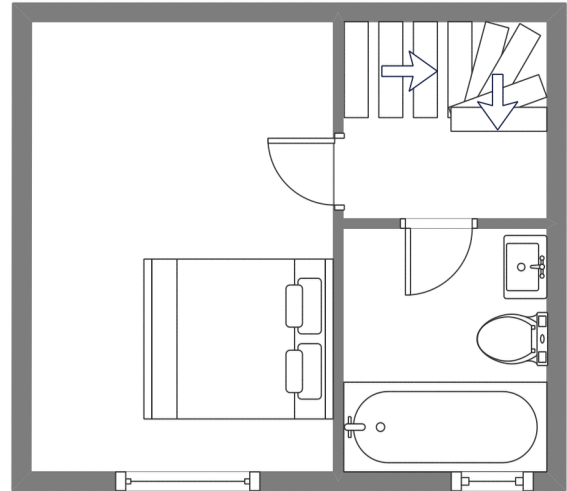
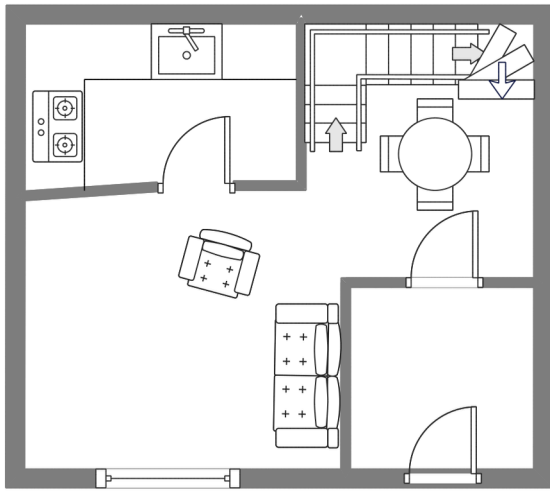
### Sleeps 2 | Wednesday Change over

- Double Arrangement
- Internet Access
- Convenient location for beaches and Quay

The cottage has an inside porch with light and coat hooks. An inner door leads to a carpeted lounge/dining area. There is a stone fireplace which houses an electric fire. The ceiling has oak beams and there is a sash cord window. There is a television, DVD recorder, radio and books for guests' use. There is a panel heater in the dining area.

A glass panelled door leads to the kitchen which is equipped with cooker, hob, extractor unit, fridge and plenty of cupboard space. The open plan stairway leads to the first floor. From the landing, there is a modern, airy bathroom with electric shower over bath, sink with shaver socket above, toilet and heated towel rail. There is also a large double bedroom with oak beams. The bed linen is of good quality as are the furnishings. There is a fitted wardrobe and plenty of drawer space. There are ceiling and wall lights and a panel wall heater.

# Layout



## Getting to the property

### Map of St Marys



### Directions from the Quay | Walking time: 5-7 minutes

Head towards the entrance to the quay  
Turn left at The Mermaid Inn on to Hugh Street  
Keep to the left right of the road  
Carry on all the way to Church Street

Stop just before the Made on Scilly shop.  
Turn right, and follow this road towards  
Porthcrossa beach  
8 Buzza Street will be on your right

What3words:///frame.skewered.chucked

Scilly Self Catering  
Lower Strand  
Isles of Scilly, TR21 0PS

Enquiries@scillyselfcatering.com  
01720 422082  
www.scillyselfcatering.com